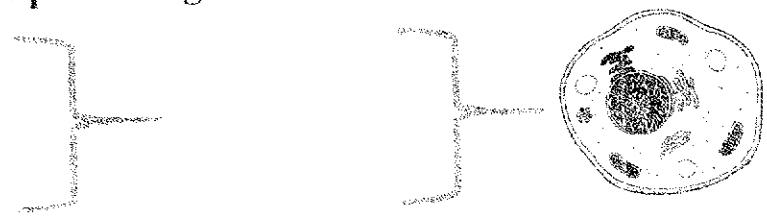


I. Macromolecules Make Up the Organelles of a Cell

- A.
- B.
- C.
- D.

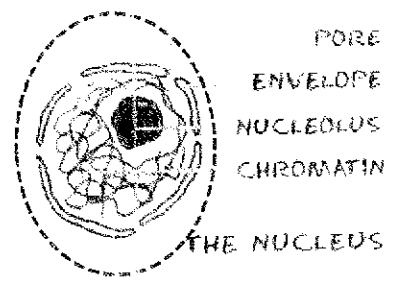


II. Cell Organelles

A. Nucleus

- a. Has a nuclear envelope
- b. Contains nucleolus
- c. Controls all cell activities

and

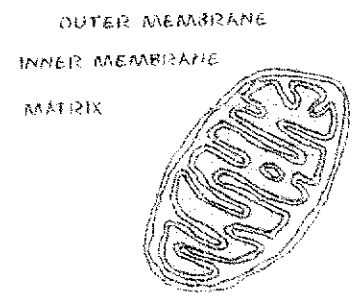


B. Mitochondria

- a. bean shape
- b. "powerhouse of cells"
- 1. Food converted into energy
- 2. (adenosine triphosphate = ATP)
- 3. Uses oxygen

shape of the cell energy

of cells") produces

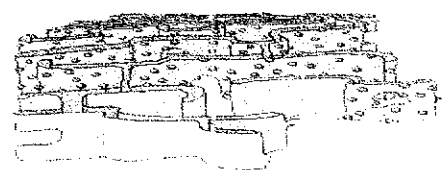


C. Endoplasmic Reticulum

- a. Site where cell proteins are made
- b. Two types of ER membrane: rough (ribosomes attached) and smooth
- c. "factory of the cell"

and

are



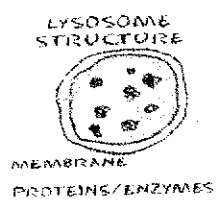
D. Golgi Apparatus

proteins



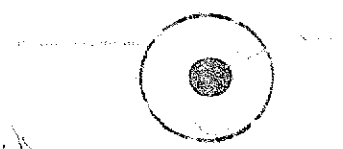
E. Lysosomes

- a. Cellular waste
- b. Breakdown of macromolecules



F. Cytoplasm (cytosol)

- a. Water based, contains organelles



G. Cytoskeleton

- a. Filaments

