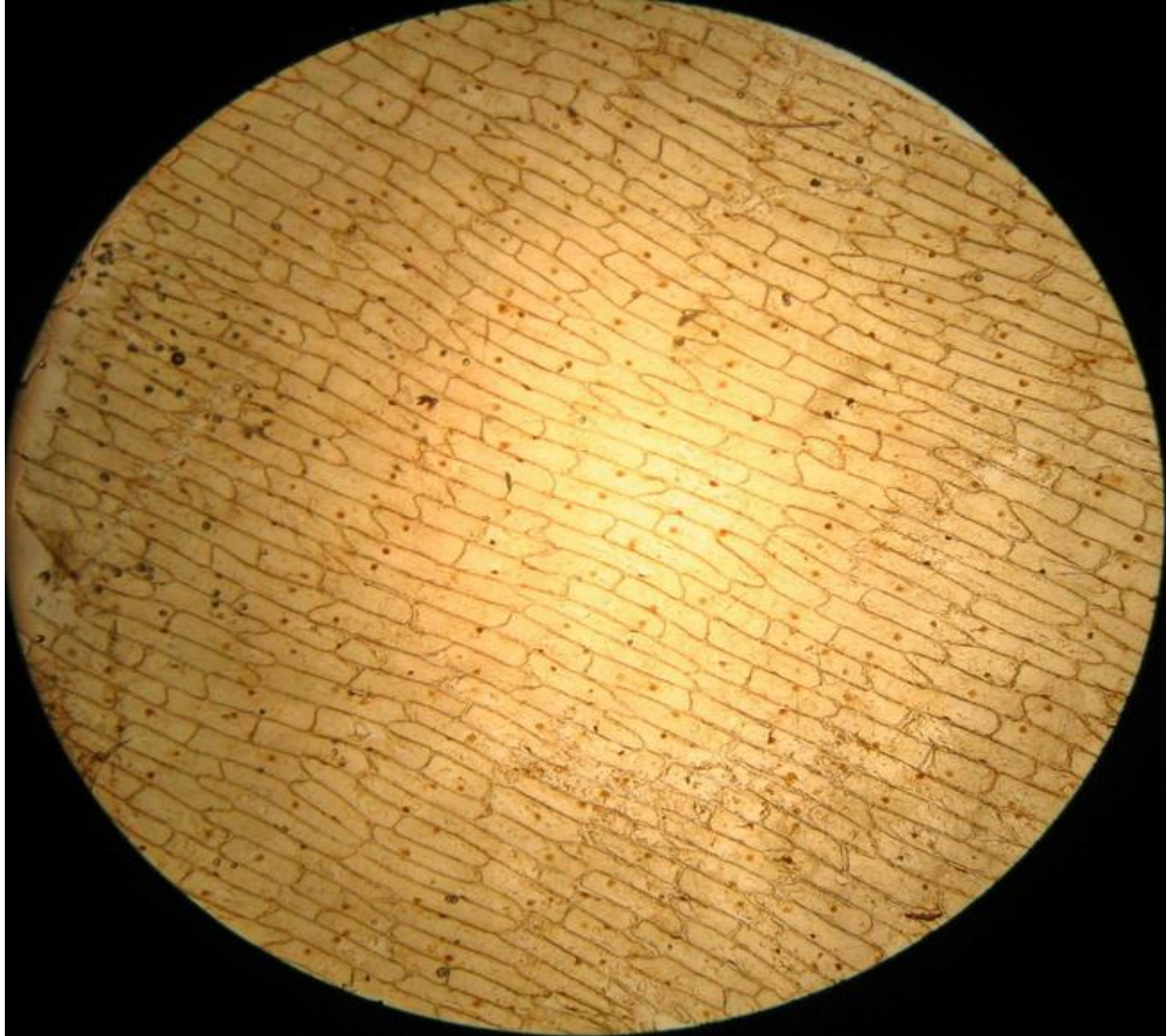
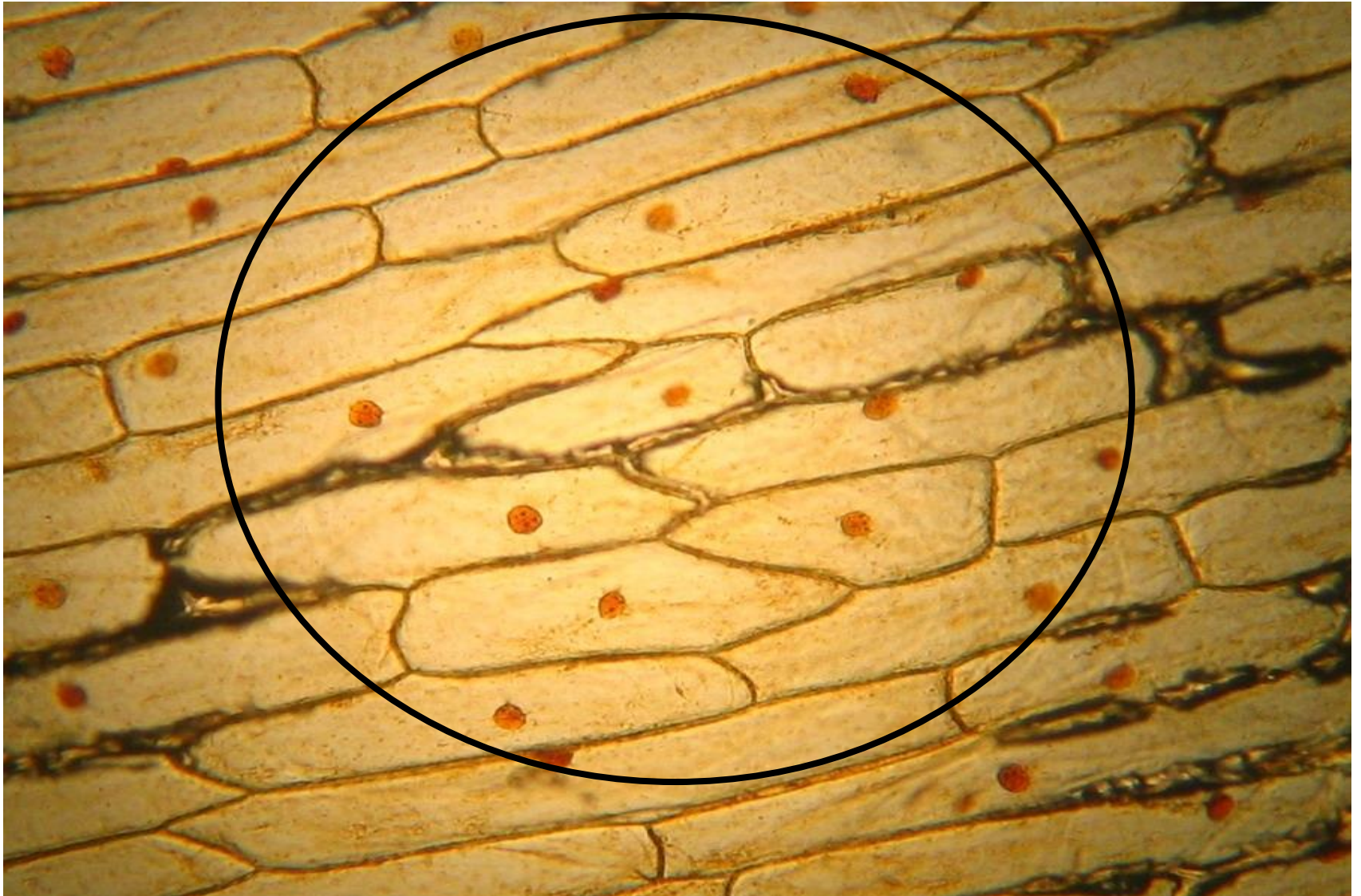


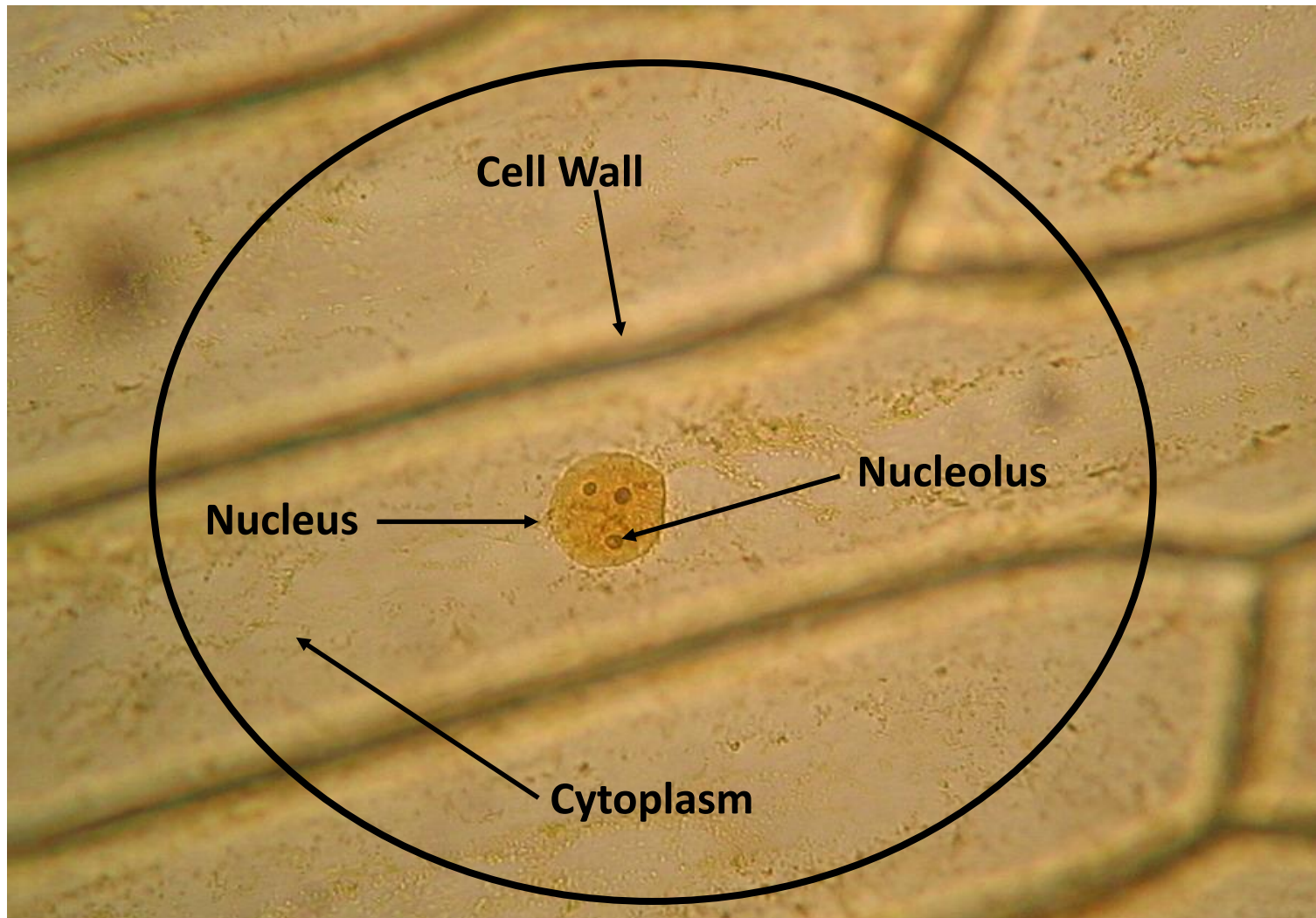
Onion epidermis (skin) 40X (**low power**), iodine stain



Onion epidermis (skin)
100X (**middle power**), iodine stain



Onion epidermal (skin) cells iodine stain, 400X (**high power**)





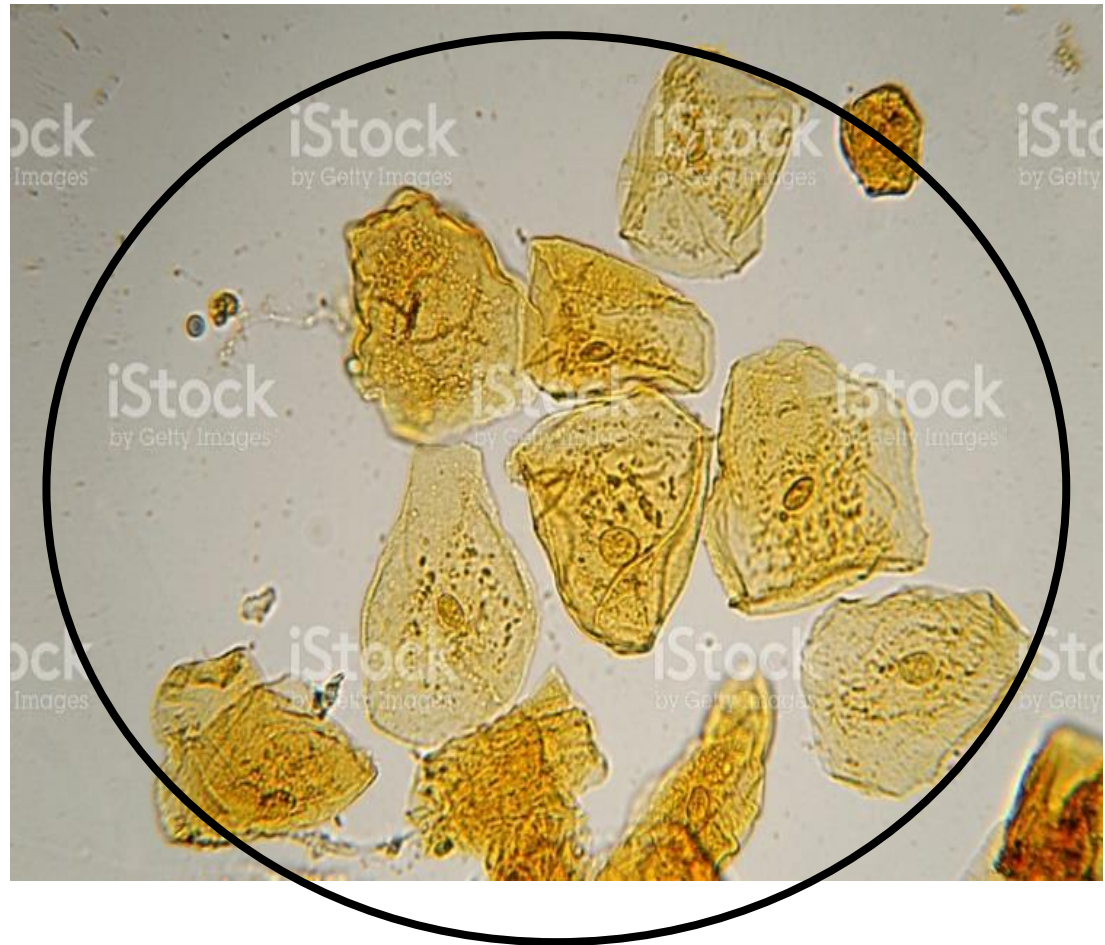
<https://www.youtube.com/watch?v=SJ5dkjFQNIY>

Step 2

A light micrograph showing human cheek cells stained with methylene blue. The cells are mostly flat and squamous, with some appearing in small clusters. The nuclei are stained a deep blue color, while the cytoplasm and extracellular matrix are a lighter blue. The background is a pale, off-white color. A large black circle is drawn around the central area of the image, highlighting the main field of view.

**Human Cheek Cells
40 X (Low Power)
Methylene Blue Stain**

Human Cheek Cells 100 X (Middle Power) Iodine Stain



Human Cheek Cells 400 X (High Power) Iodine

