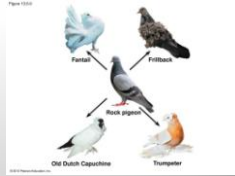
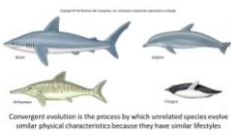
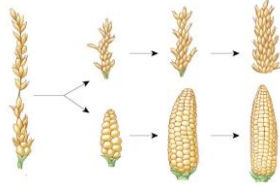
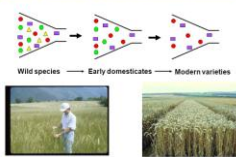


Convergent Evolution: Streamlining



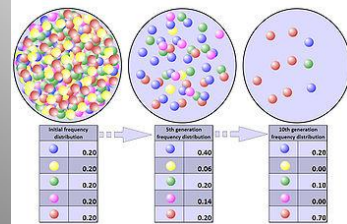
7.3 Artificial Selection

Loss of genetic diversity as a result of domestication and selection



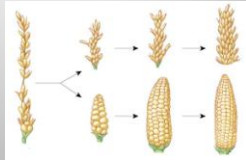
ENDURING UNDERSTANDING

EVO-1 Evolution is characterized by a change in the genetic makeup of a population over time and is supported by multiple lines of evidence.



EVO-1.F Explain how humans can affect diversity within a population.

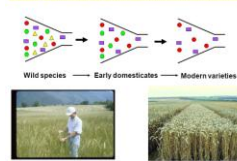
- Through artificial selection, humans affect variation in other species



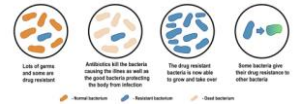
EVO-1.F Explain how humans can affect diversity within a population.

- Loss of genetic diversity within a crop species
- Overuse of antibiotic

Loss of genetic diversity as a result of domestication and selection



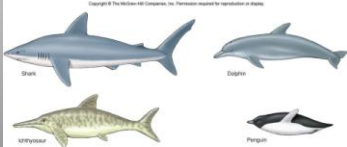
HOW ANTIBIOTIC RESISTANCE HAPPENS



EVO-1.G Explain the relationship between changes in the environment and evolutionary changes in the population.

- Convergent evolution occurs when similar selective pressures result in similar phenotypic adaptations in different populations or species.

Convergent Evolution: Streamlining



Convergent evolution is the process by which unrelated species evolve similar physical characteristics because they have similar lifestyles