

Chapter 1. The Human Body: An Orientation

○ Blood vessels

○ Heart

○ Nasal cavity

○ Lungs

○ Trachea

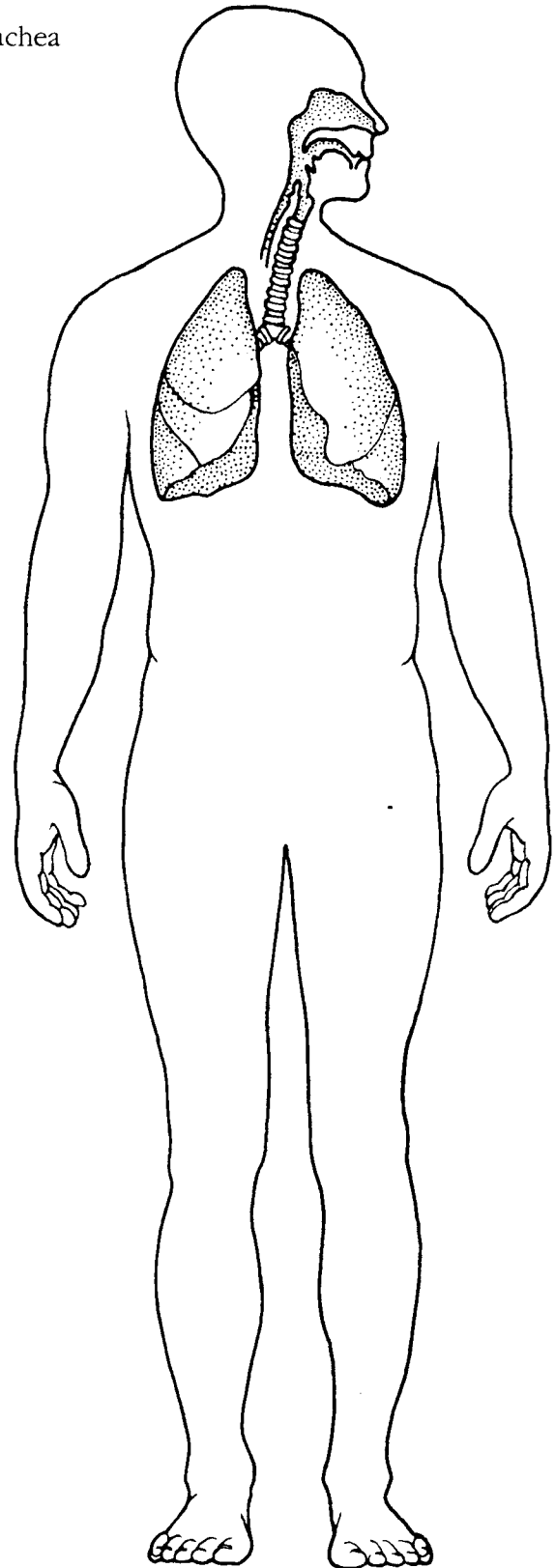
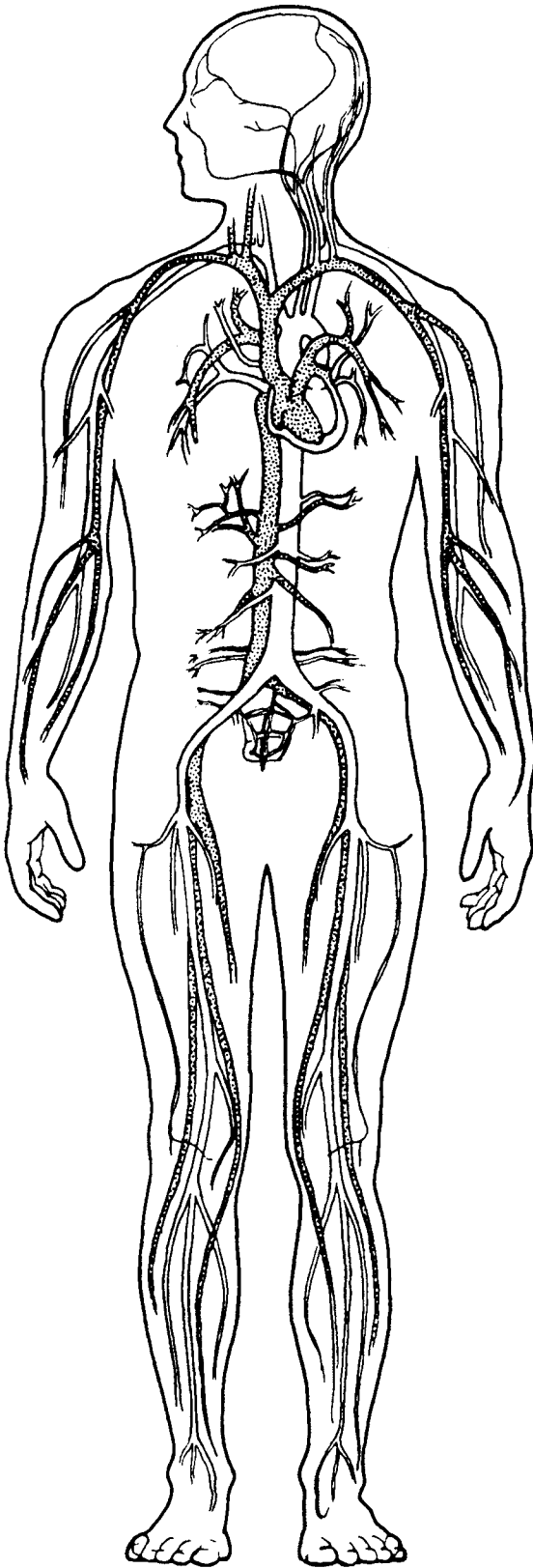


Figure 1-1

1



Figure 1-2

- Brain
- Spinal cord
- Nerves

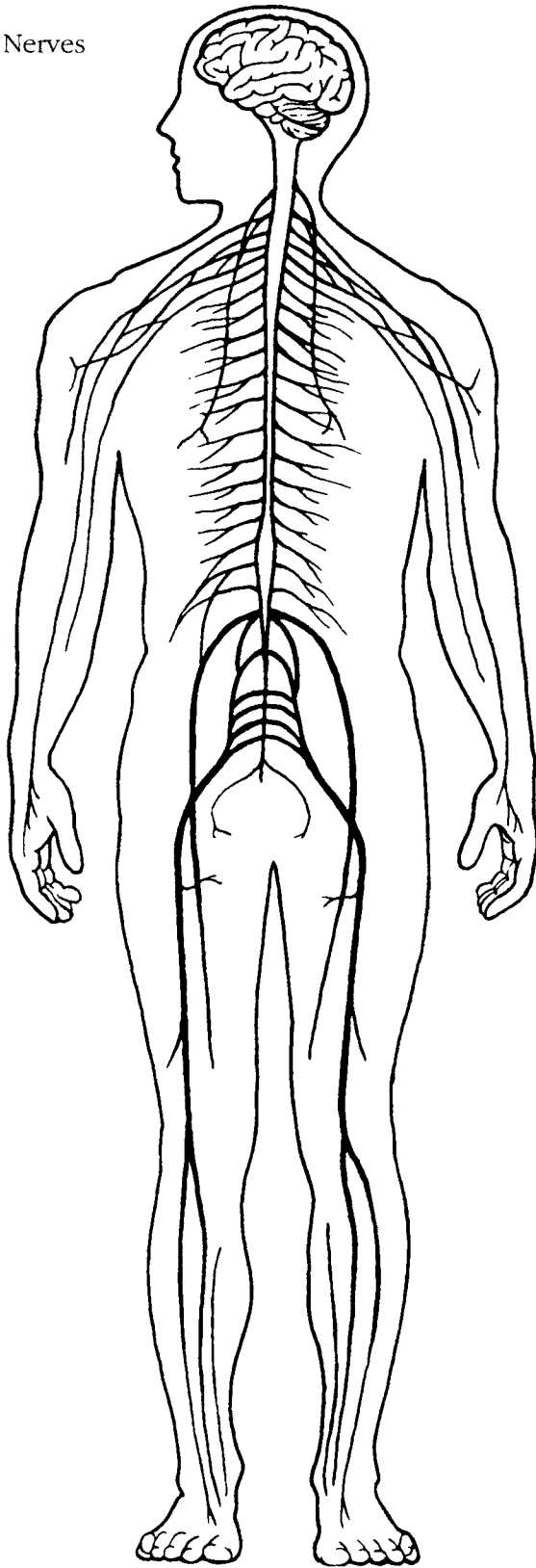


Figure 1-3

- Kidneys
- Ureters
- Bladder

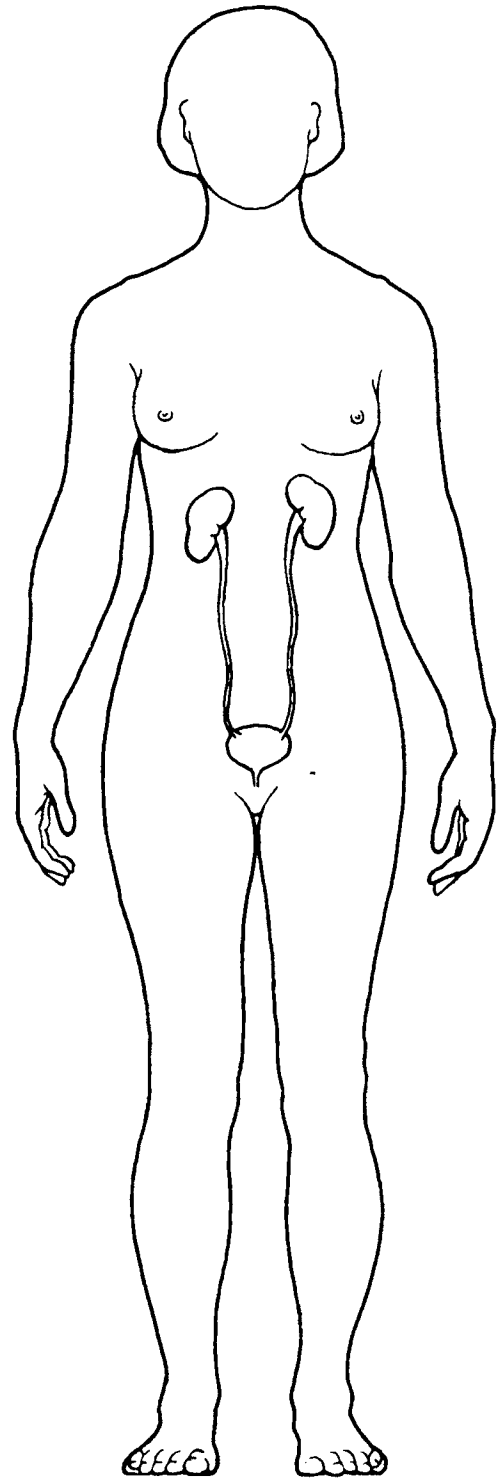
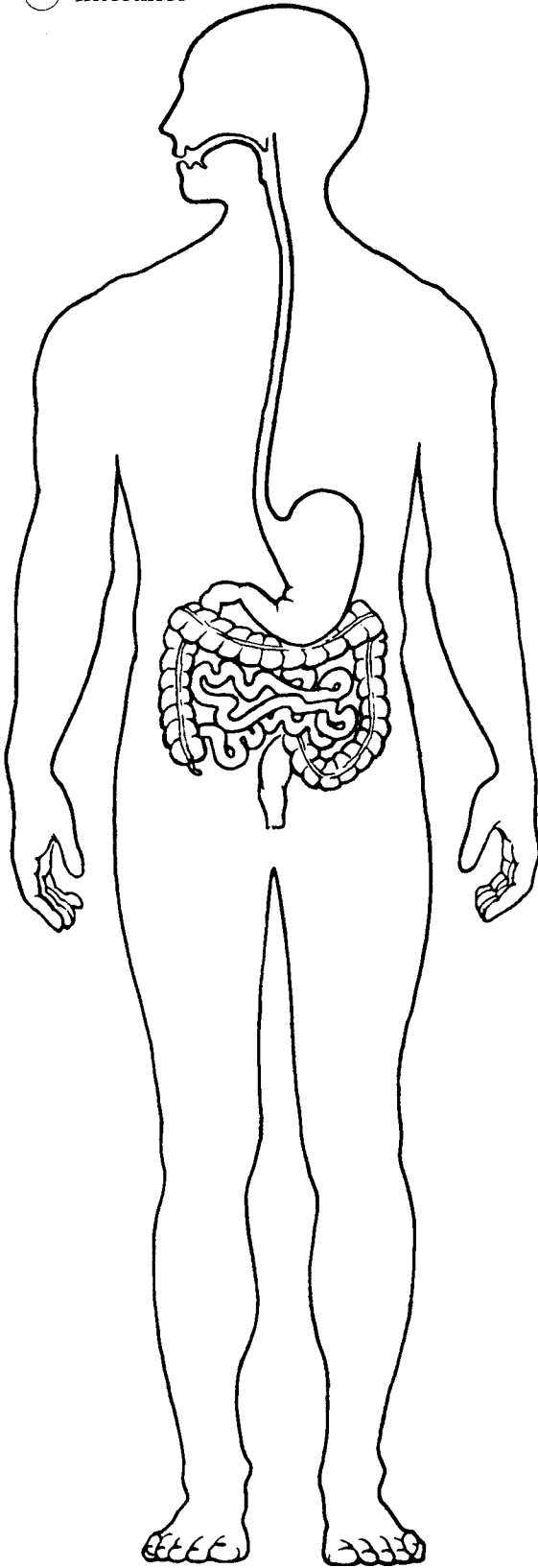


Figure 1-4

- Stomach
- Intestines



- Ovaries
- Uterus

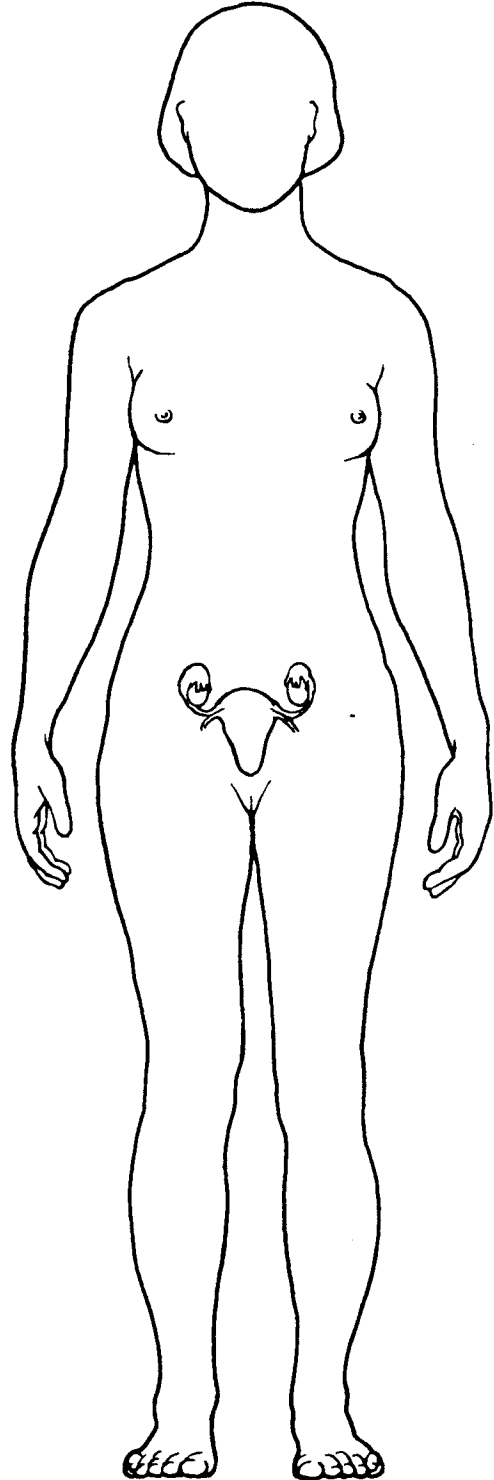


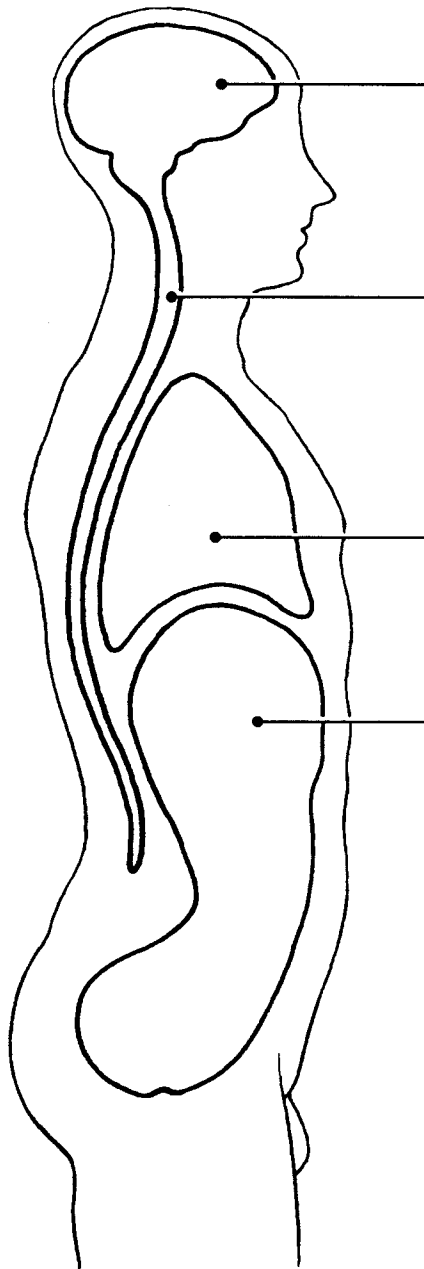
Figure 1-5



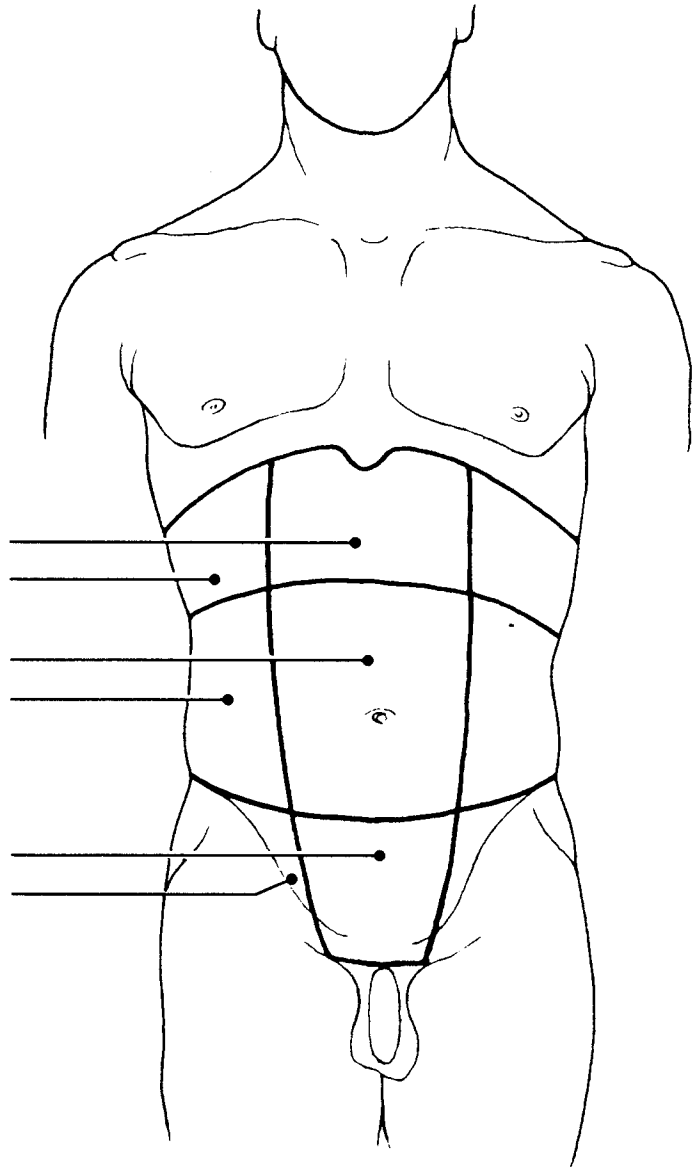
Figure 1-6

13. Select different colors for the *dorsal* and *ventral* body cavities. Color the coding circles below and the corresponding cavities in part A of Figure 1-7. Complete the figure by labeling those body cavity subdivisions that have a leader line. Complete part B by labeling each of the abdominal regions indicated by a leader line.

- Dorsal body cavity Ventral body cavity



A



B

Figure 1-7